

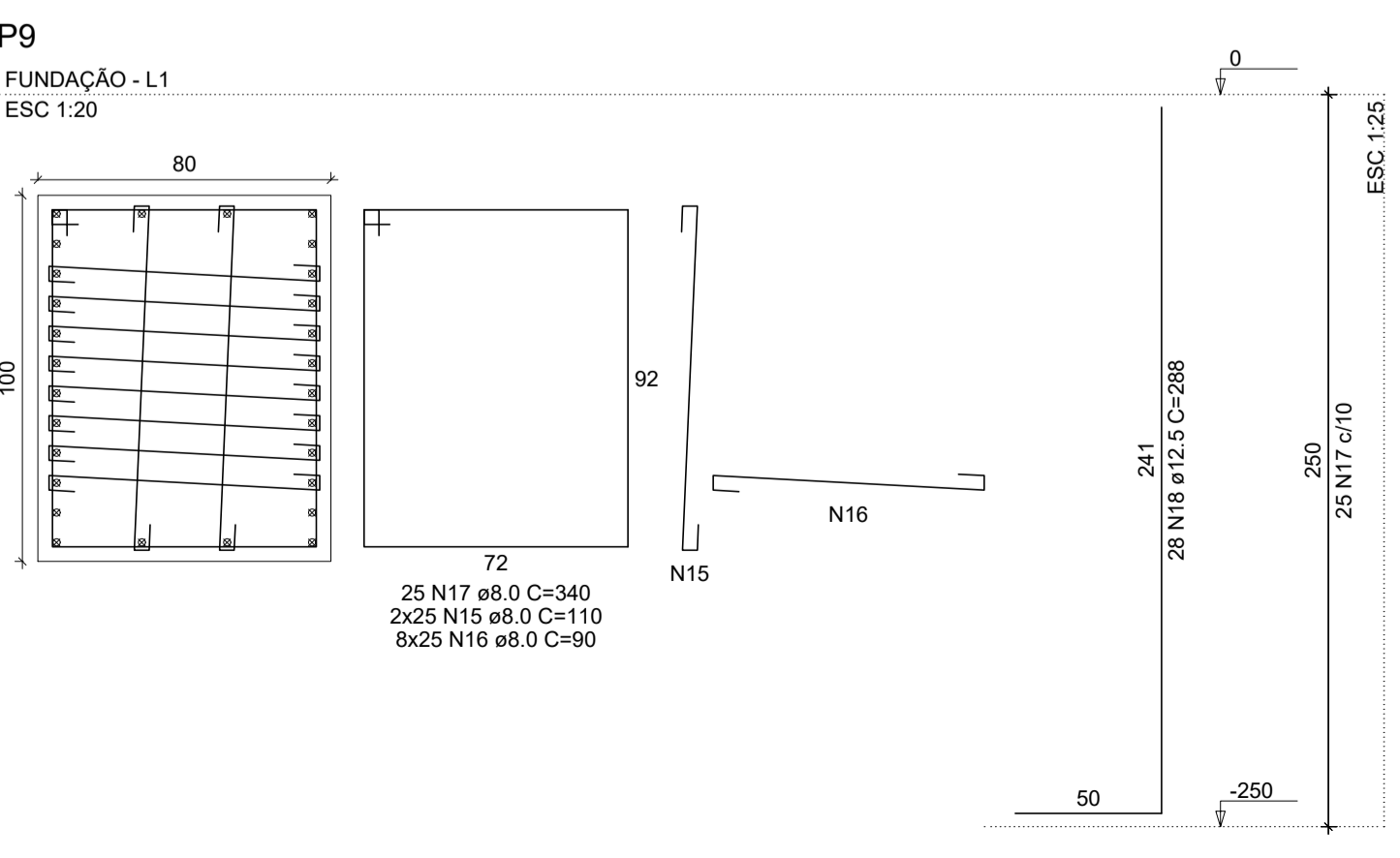
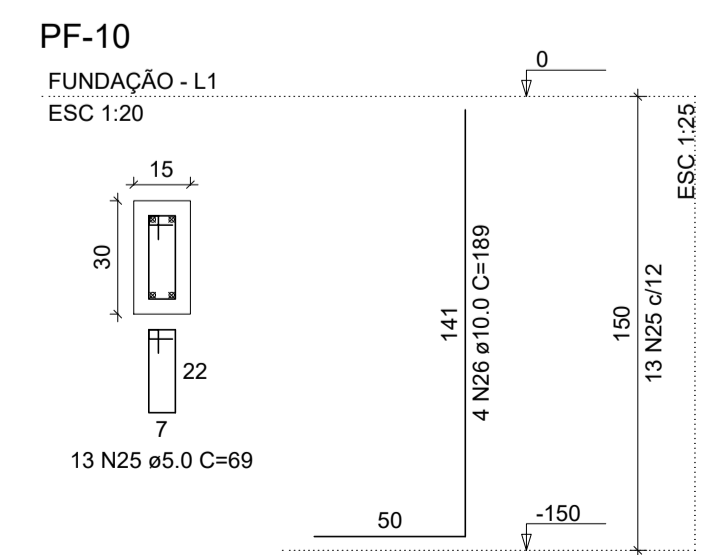
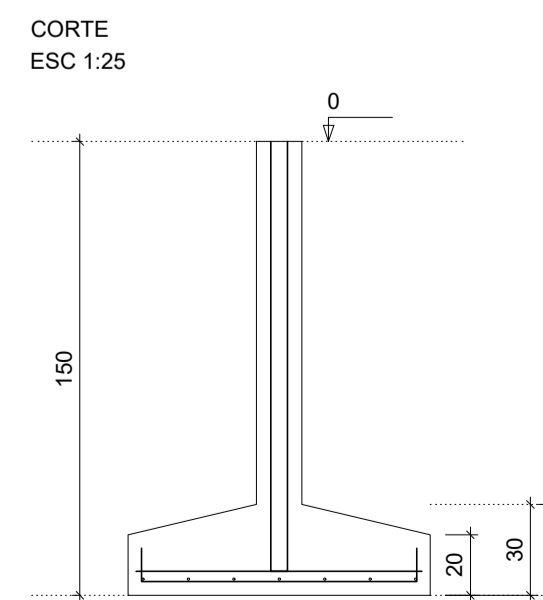
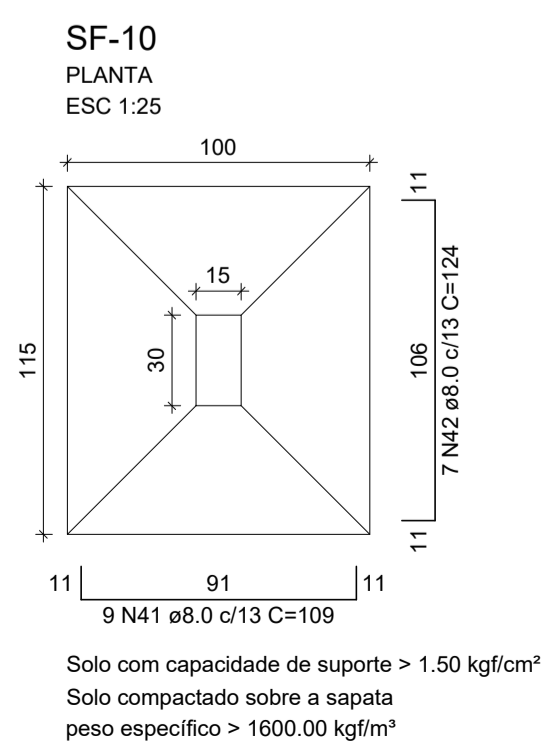
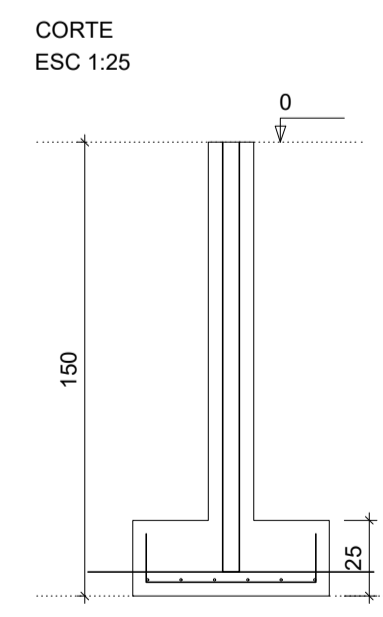
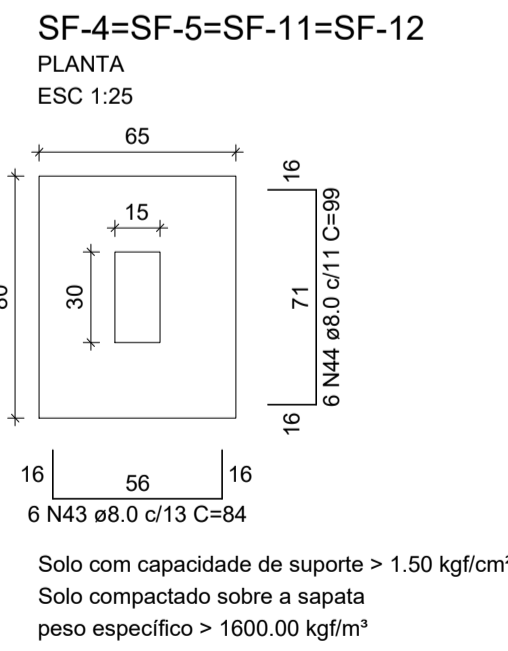
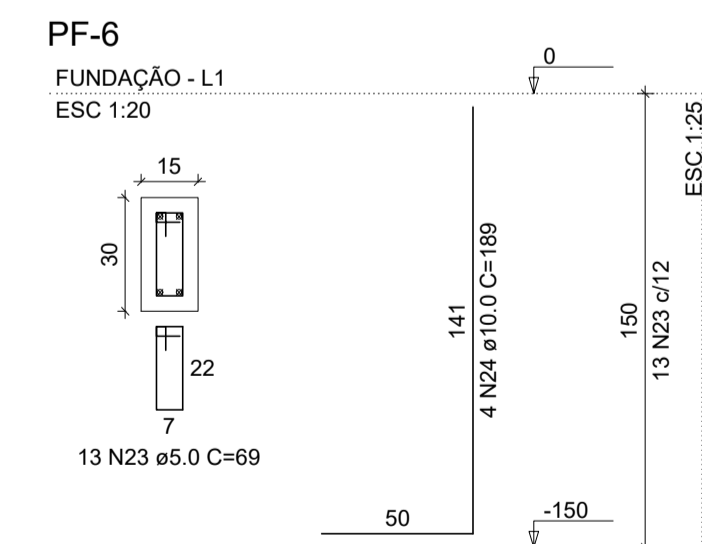
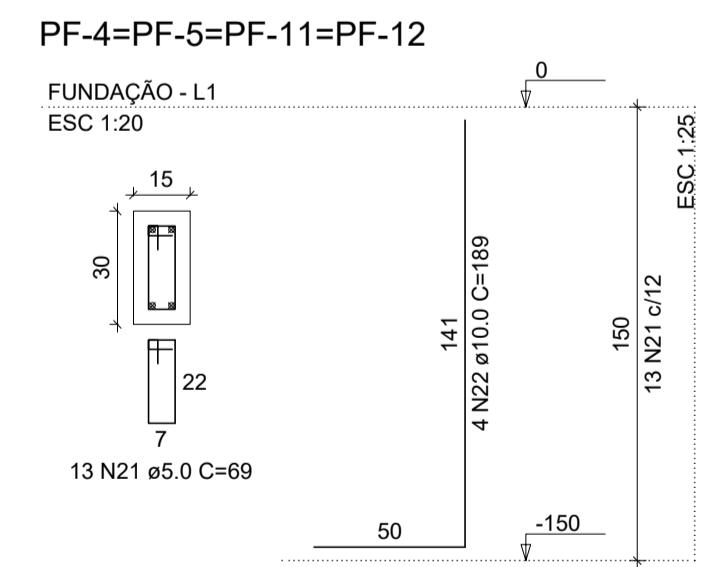
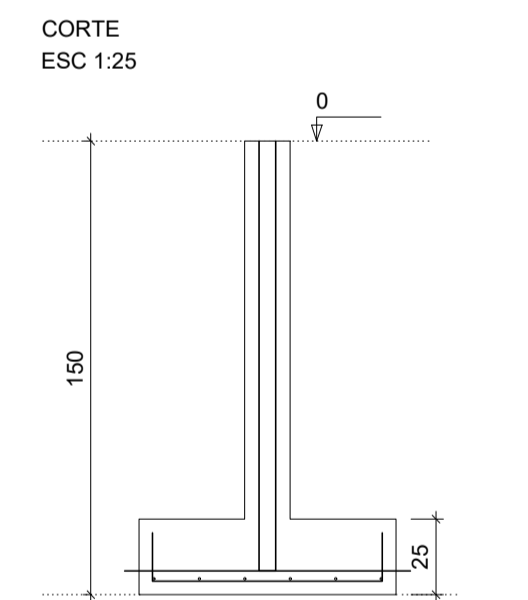
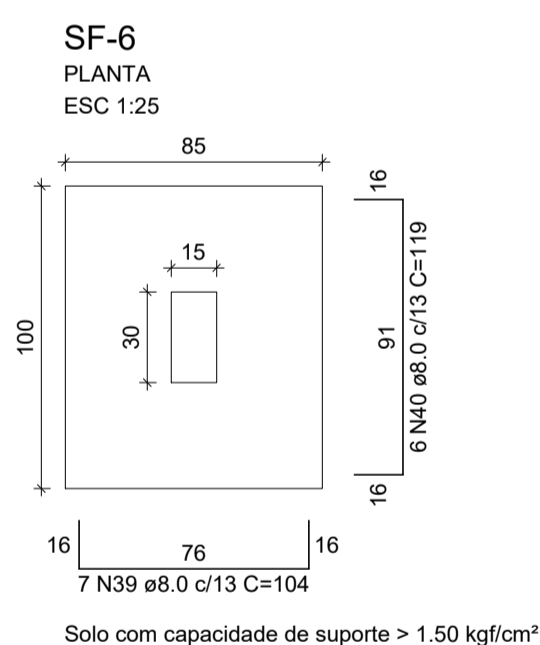
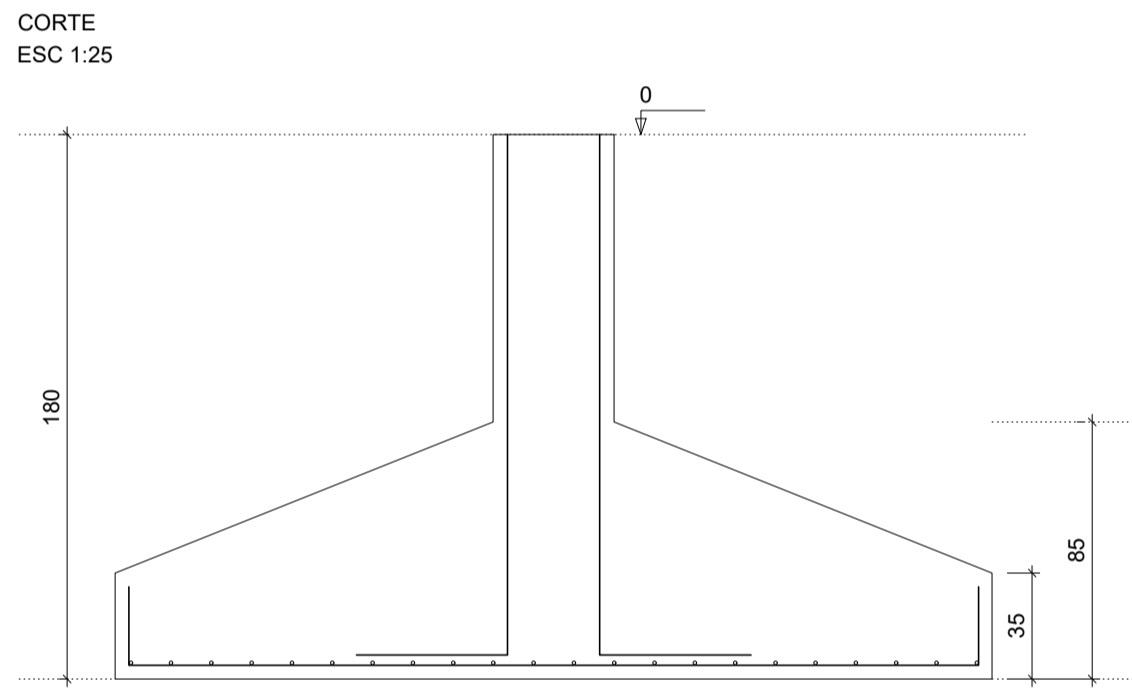
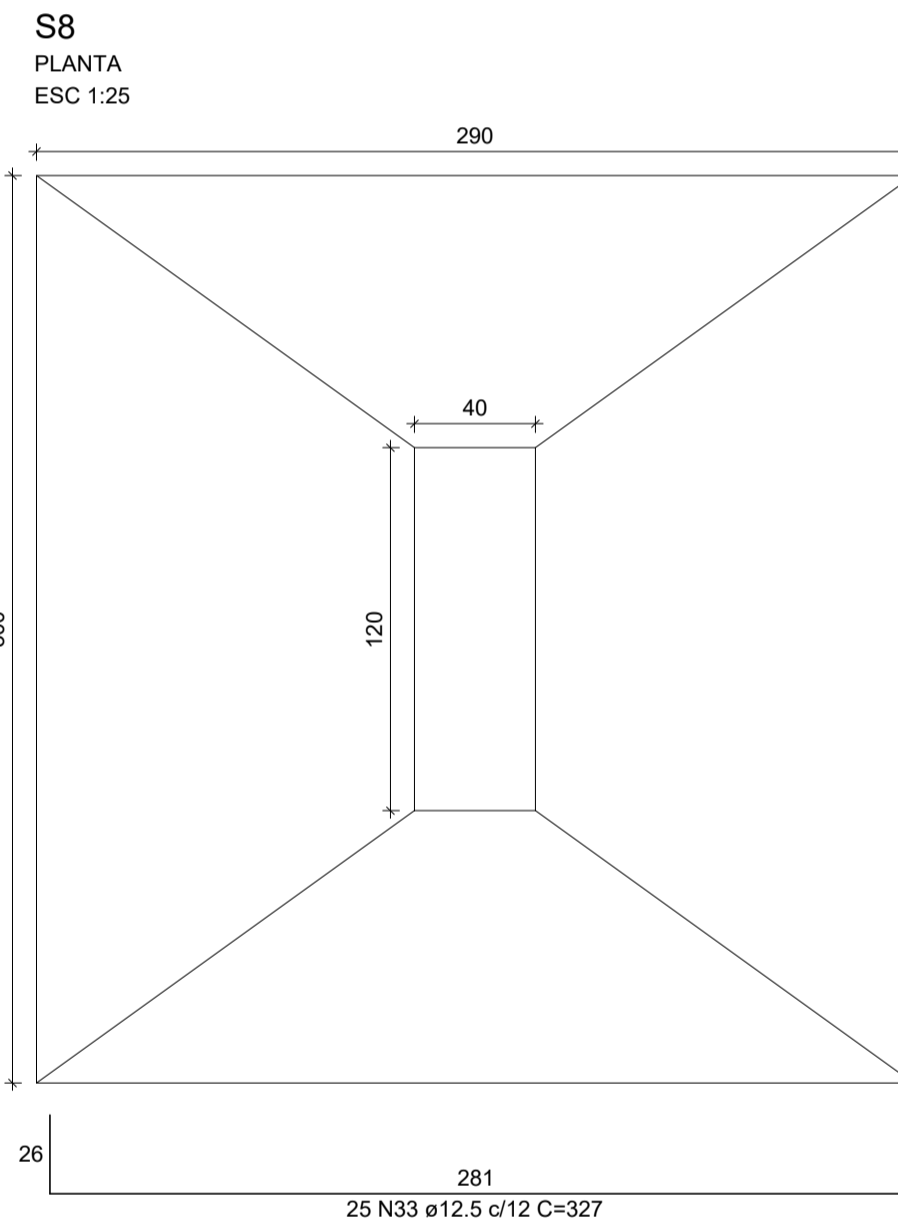
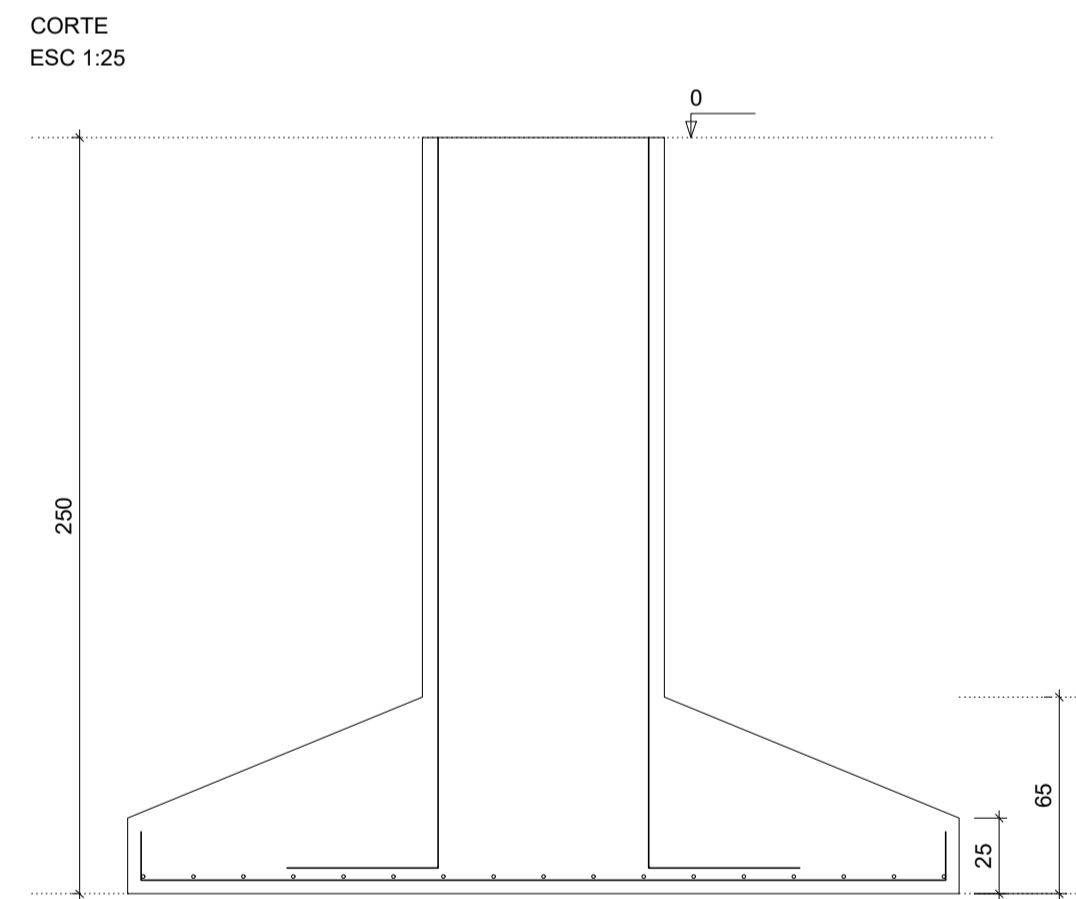
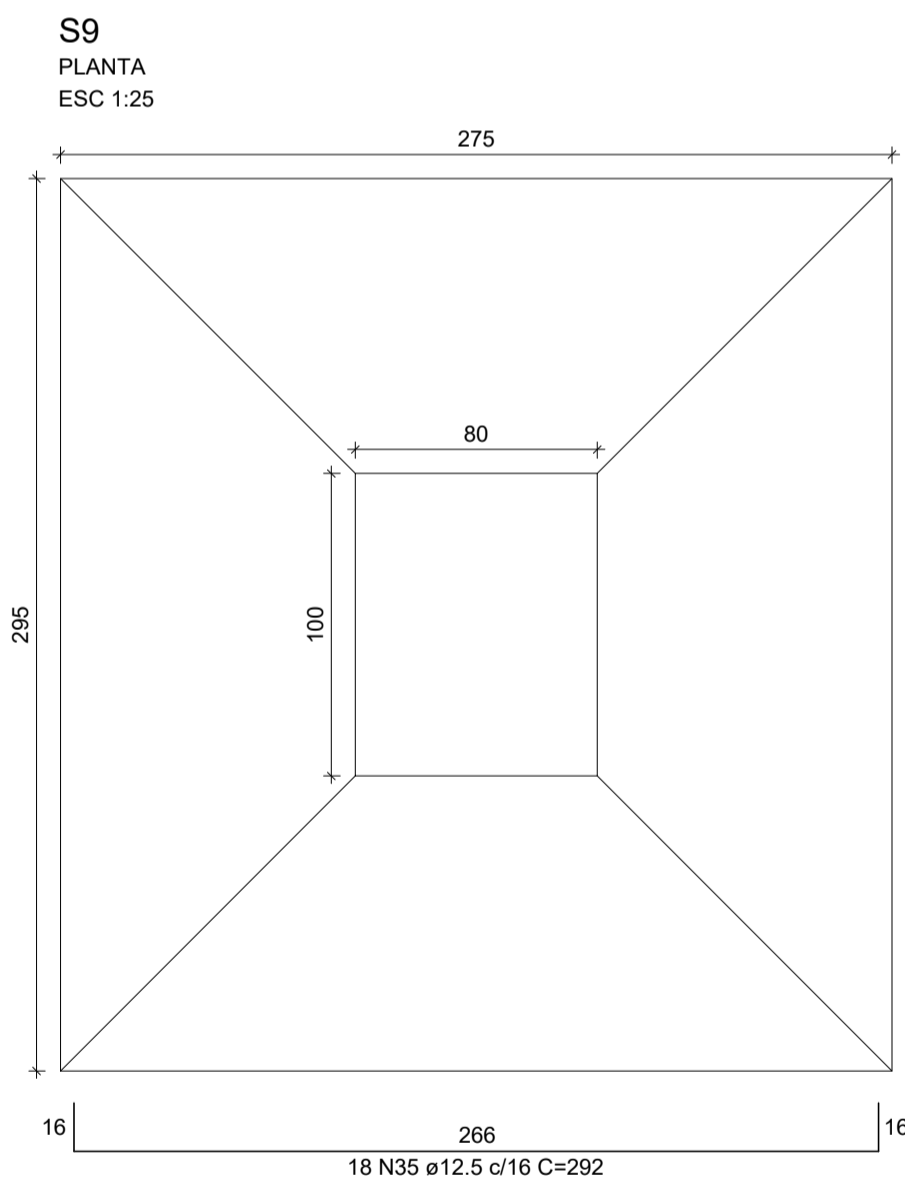
RELAÇÃO DO AÇO

ELEMENTO	AÇO	N	DIAM (mm)	QUANT	C UNIT (cm)	C.TOTAL (cm)
2xP1	CA60	1	5.0	26	59	1534
	CA50	2	10.0	8	189	1512
2xP2	CA60	3	5.0	26	59	1534
	CA50	10	8.0	8	189	1512
P3	CA60	5	5.0	10	59	590
	CA50	6	12.5	4	188	752
P7	CA60	7	5.0	32	127	4064
	CA60	8	5.0	160	47	7520
	CA60	9	5.0	32	299	9568
	CA50	10	12.5	16	288	4608
P8	CA60	10	5.0	23	127	2921
	CA60	12	5.0	115	47	5405
	CA60	13	5.0	23	299	6877
	CA50	14	12.5	16	218	3488
P9	CA50	15	8.0	50	110	5500
	CA50	16	8.0	200	90	18000
	CA50	17	8.0	25	340	8500
P15	CA50	18	12.5	28	288	8064
	CA60	19	5.0	13	59	767
	CA50	20	10.0	4	189	756
4xPF-4	CA60	21	5.0	52	69	3588
	CA50	22	10.0	16	189	3024
PF-6	CA60	23	5.0	13	69	897
	CA50	24	10.0	4	189	756
PF-10	CA60	25	5.0	13	69	897
	CA50	26	10.0	4	189	756
2xS1	CA50	27	8.0	12	109	1308
	CA50	28	8.0	14	104	1456
2xS3	CA50	29	8.0	14	109	1526
	CA50	30	8.0	14	104	1456
S7	CA50	31	10.0	18	308	5544
	CA50	32	12.5	18	227	4086
S8	CA50	33	12.5	25	327	8175
	CA50	34	12.5	22	337	7414
S9	CA50	35	12.5	18	292	5256
	CA50	36	12.5	17	312	5304
2xS14	CA50	37	8.0	12	99	1188
	CA50	38	8.0	12	89	1068
SF-6	CA50	39	8.0	7	104	728
	CA50	40	8.0	6	119	714
SF-10	CA50	41	8.0	9	109	981
	CA50	42	8.0	7	124	868
4xSF-11	CA50	43	8.0	24	84	2016
	CA50	44	8.0	24	99	2376

RESUMO DO AÇO

AÇO	DIAM (mm)	C.TOTAL (m)	QUANT + 0% (Barra)	PESO + 0% (kg)
CA50	8.0	476.9	40	189.2
	10.0	38.6	12	85.5
CA60	12.5	471.5	40	454.2
	5.0	461.6	39	71.2
PESO TOTAL (kg)				
CA50		727.8		
CA60		71.2		

Volume de concreto (C-30) = 17,93 m<sup>3</sup>  
Área de forma = 56,62 m<sup>2</sup>



Aprovação:

**Lucas Costa Alves**  
Engenheiro Civil  
CREA RS223411  
(051) 98011-8413  
lucascostaalves@hotmail.com

Projetos & Execuções

**PROJETO ESTRUTURAL**

PROJETO: **PÓRTECO ACESSO NORTE** SITUACÃO:

CLIENTE: Prefeitura Municipal de Tavares

ENDEREÇO DA OBRA: Avenida Izidro Teixeira Machado, Centro, Tavares - RS

RESP. TÉCNICO: **LUCAS COSTA ALVES** CLIENTE: Prefeitura Municipal de Tavares

CONTEÚDO: Detalhamento fundações ESCALA: Indicada no desenho FORMATO: A1 (594 x 841) PRANCHA: EST 3/5

DATA: 17/03/2019 REVERSO: 001