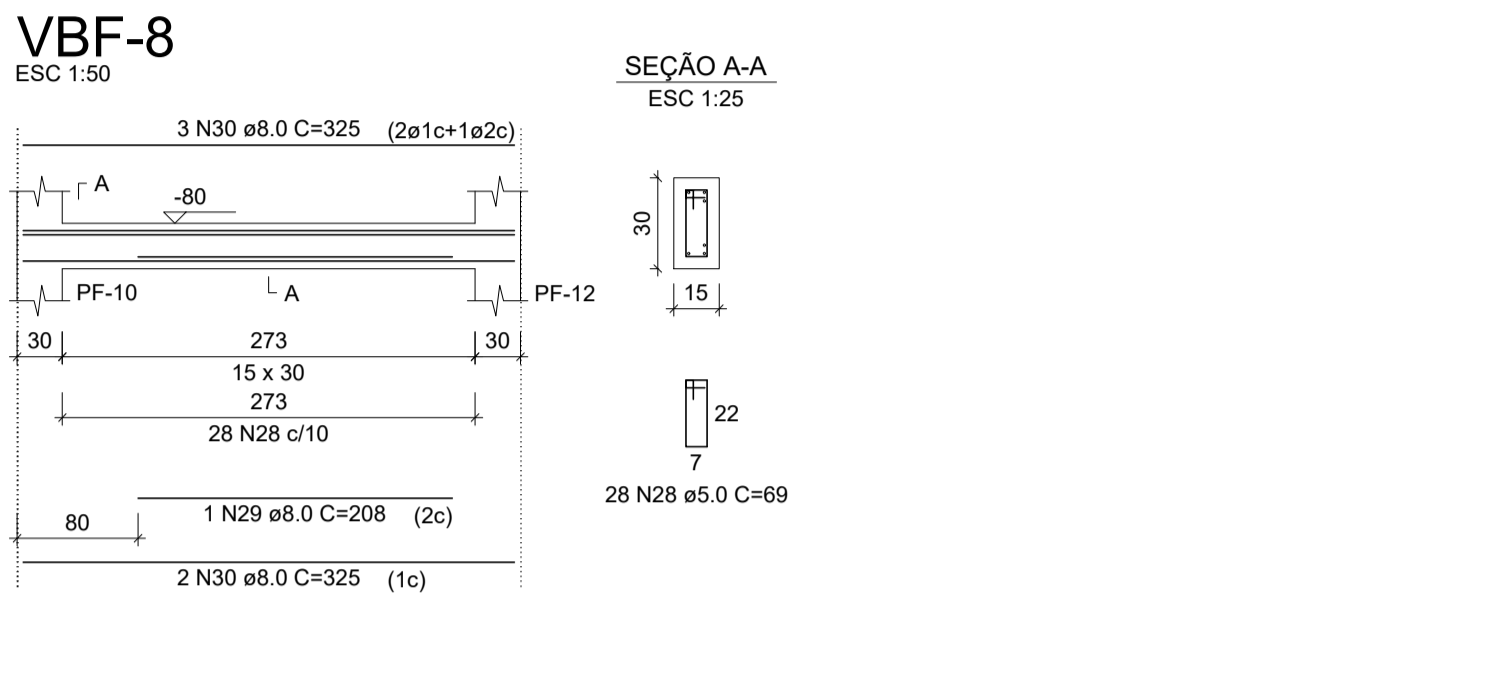
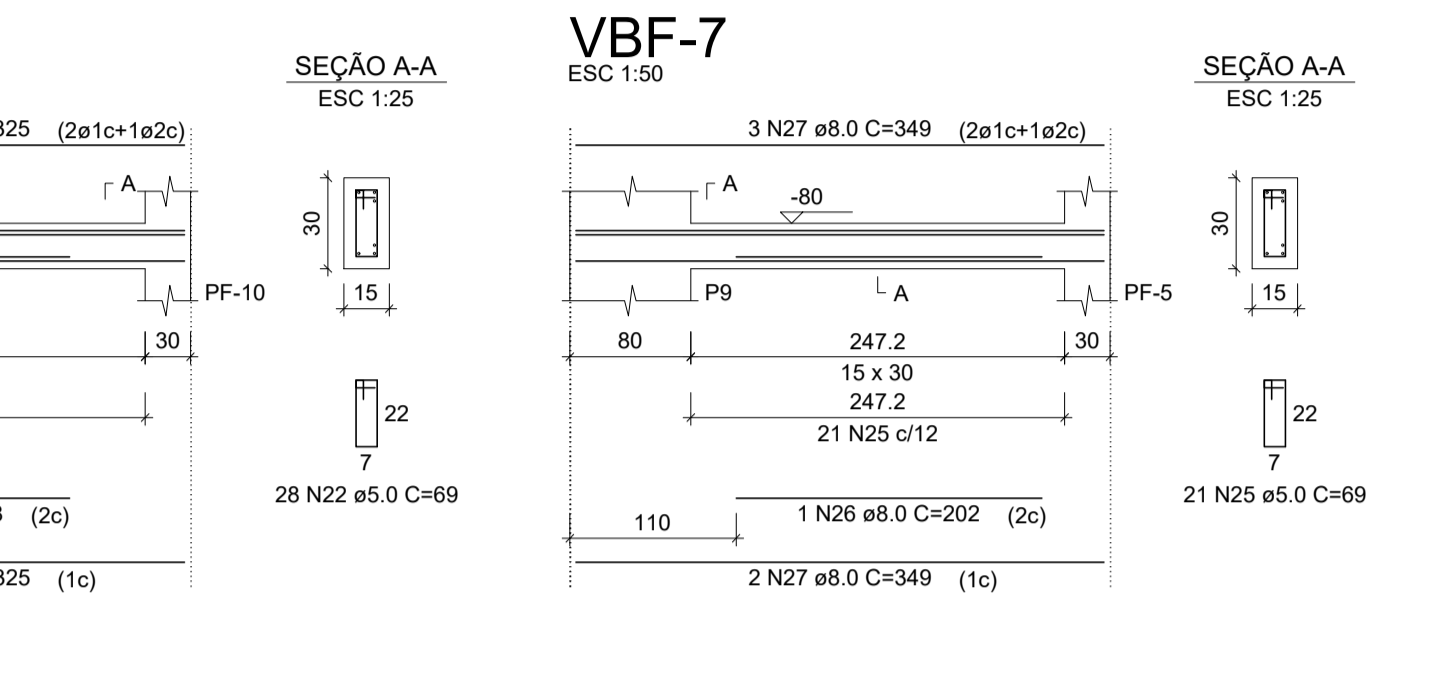
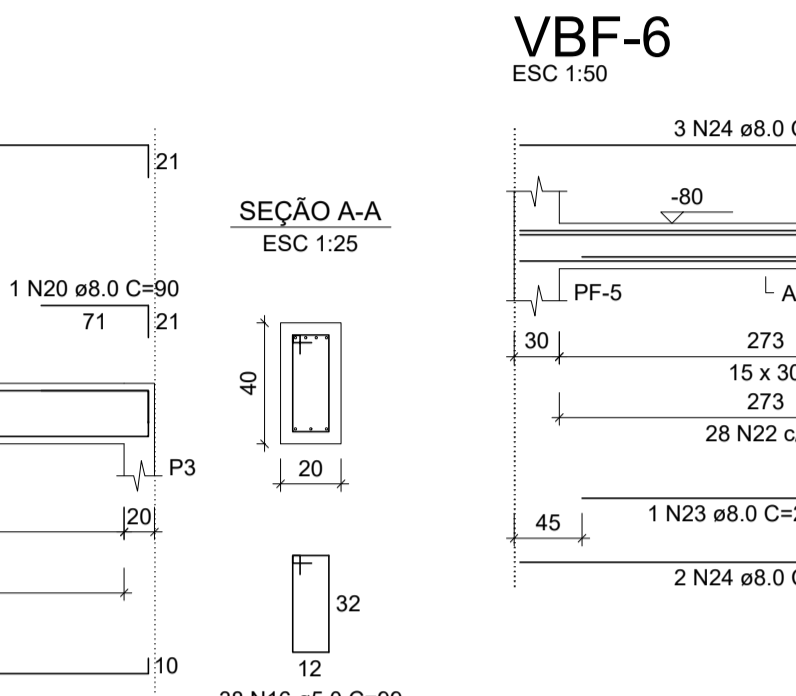
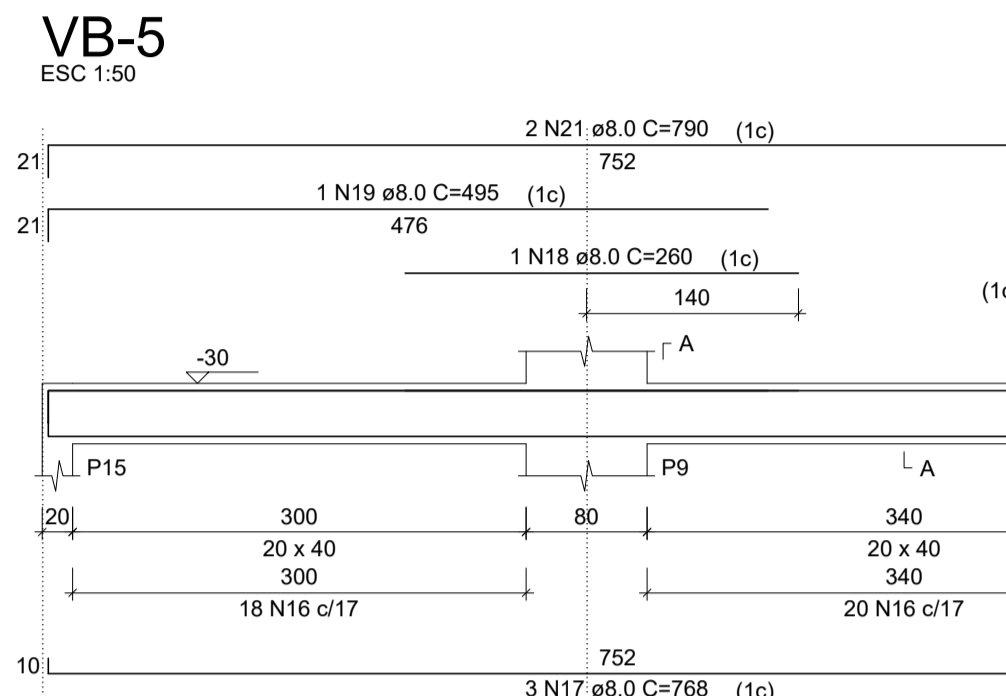


RELAÇÃO DO AÇO

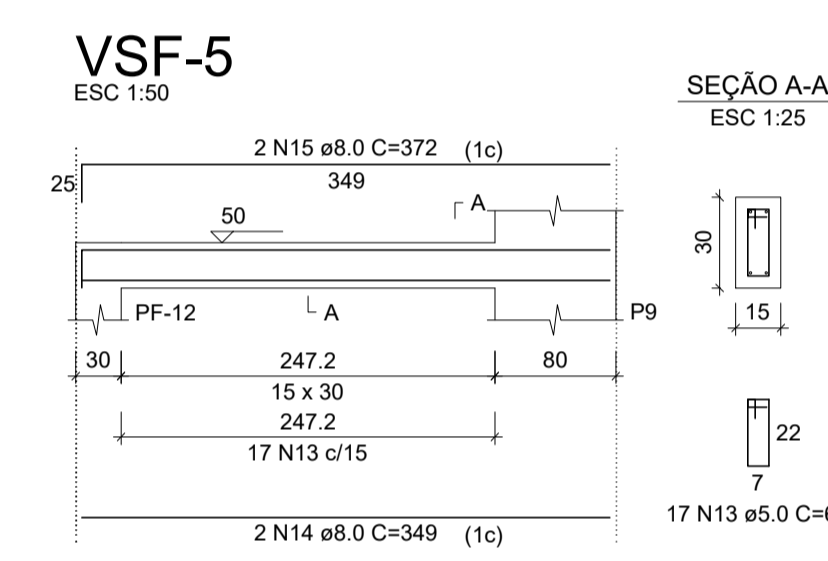
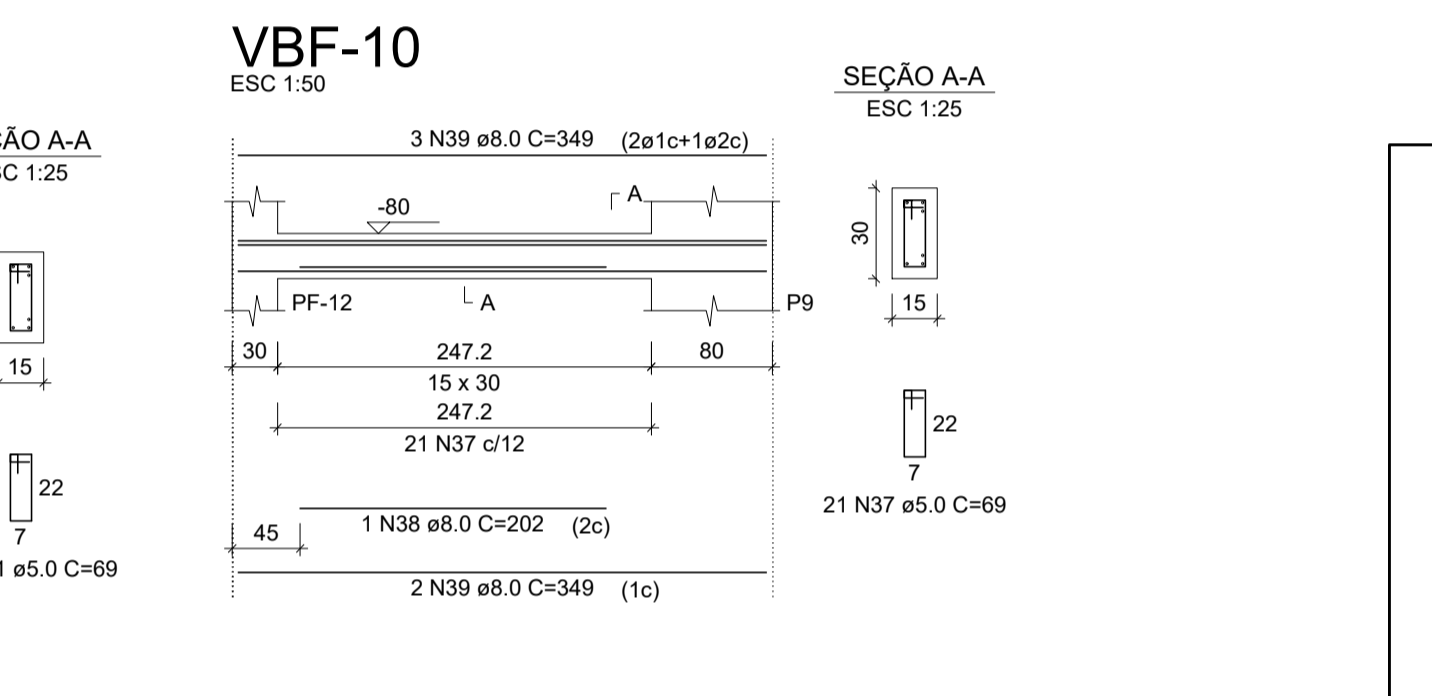
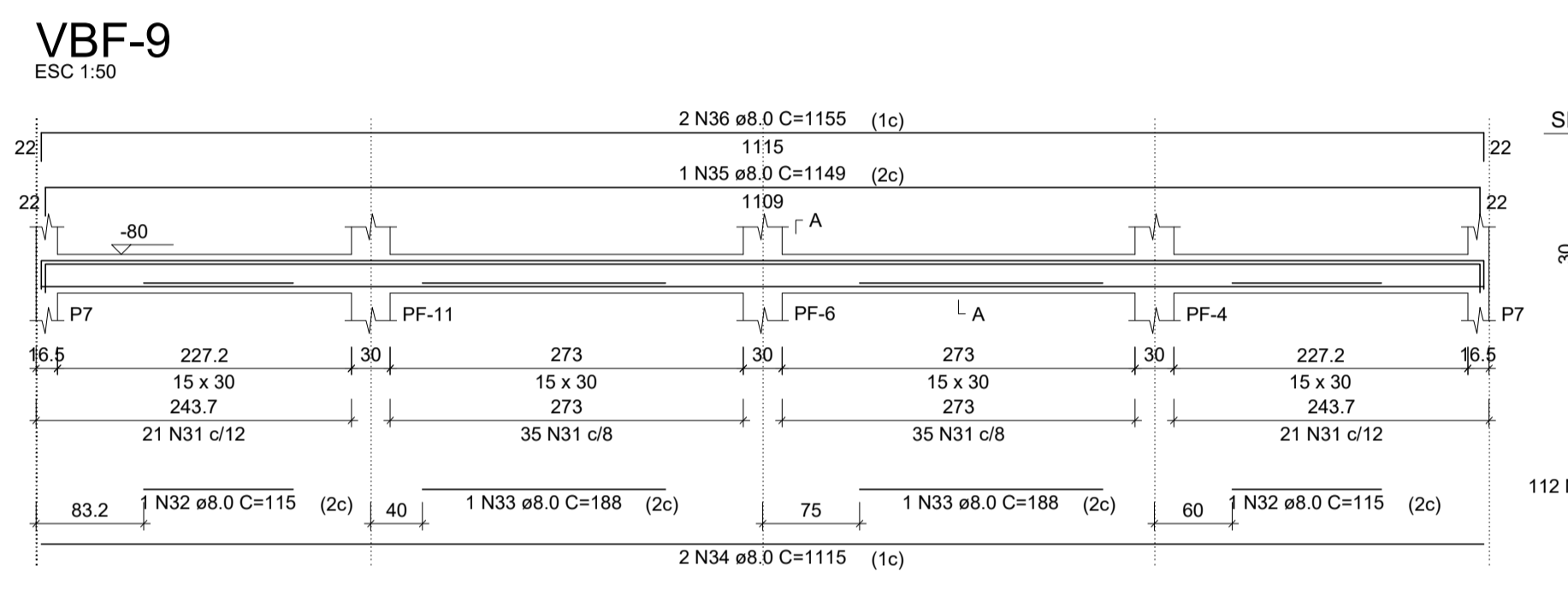
ELEMENTO	AÇO	N	DIAM (mm)	QUANT	C.UNIT (cm)	C.TOTAL (cm)
VB-1	CA60	1	5.0	23	99	2277
	CA50	2	8.0	1	167	167
	CA50	3	8.0	1	166	166
VB-2	CA50	4	8.0	2	451	902
	CA50	5	8.0	3	470	1410
	CA60	6	5.0	13	99	1287
	CA50	7	8.0	1	153	153
VB-3	CA50	8	8.0	2	297	594
	CA50	9	8.0	3	316	948
	CA60	10	5.0	36	99	3564
	CA50	11	8.0	3	768	2304
	CA50	12	8.0	3	790	2370
	CA60	13	5.0	36	99	3564
VB-4	CA50	14	8.0	3	768	2304
	CA50	15	8.0	3	790	2370
	CA60	16	5.0	38	99	3762
	CA50	17	8.0	3	768	2304
VB-5	CA50	18	8.0	1	260	260
	CA50	19	8.0	1	485	485
	CA50	20	8.0	1	90	90
VBF-6	CA50	21	8.0	2	790	1580
	CA60	22	5.0	28	69	1932
	CA50	23	8.0	1	208	208
	CA50	24	8.0	5	325	1625
VBF-7	CA60	25	5.0	21	69	1449
	CA50	26	8.0	1	202	202
	CA50	27	8.0	5	349	1745
VBF-8	CA60	28	5.0	28	69	1932
	CA50	29	8.0	1	208	208
	CA50	30	8.0	5	325	1625
VBF-9	CA60	31	5.0	69	7728	7728
	CA50	32	8.0	2	115	230
	CA50	33	8.0	2	188	376
VBF-10	CA50	34	8.0	2	1115	2230
	CA50	35	8.0	1	1149	1149
	CA50	36	8.0	2	1155	2310
	CA60	37	5.0	21	69	1449
	CA50	38	8.0	1	202	202
CA50	39	8.0	5	349	1745	



RESUMO DO AÇO

AÇO	DIAM (mm)	C.TOTAL (m)	QUANT + 0% (Barras)	PESO + 0% (kg)
CA50	8.0	322.7	27	127.3
CA60	5.0	289.4	25	44.6
PESO TOTAL (kg)				
CA50		127.3		
CA60		44.6		

Volume de concreto (C-30) = 3.56 m³
Área de forma = 49.22 m²



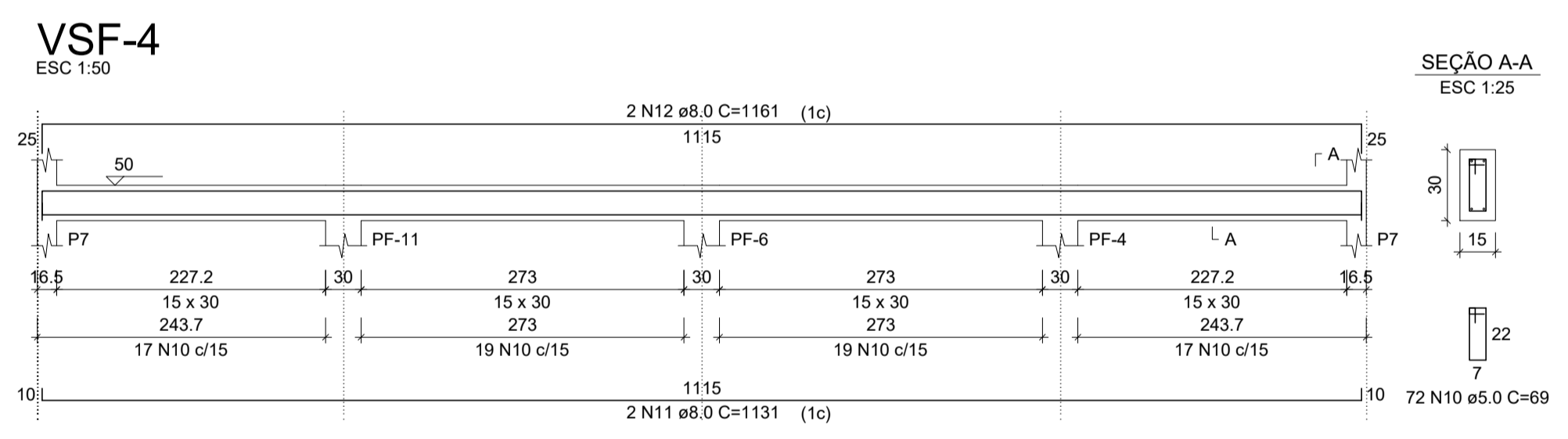
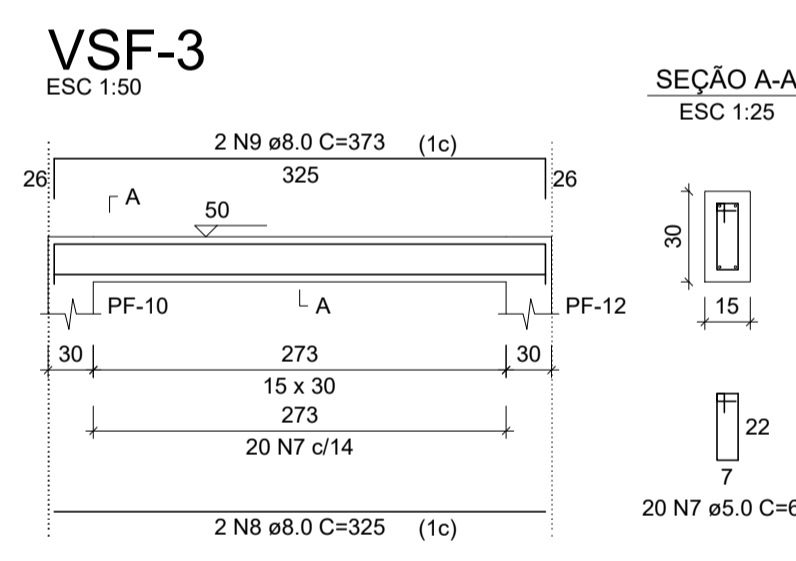
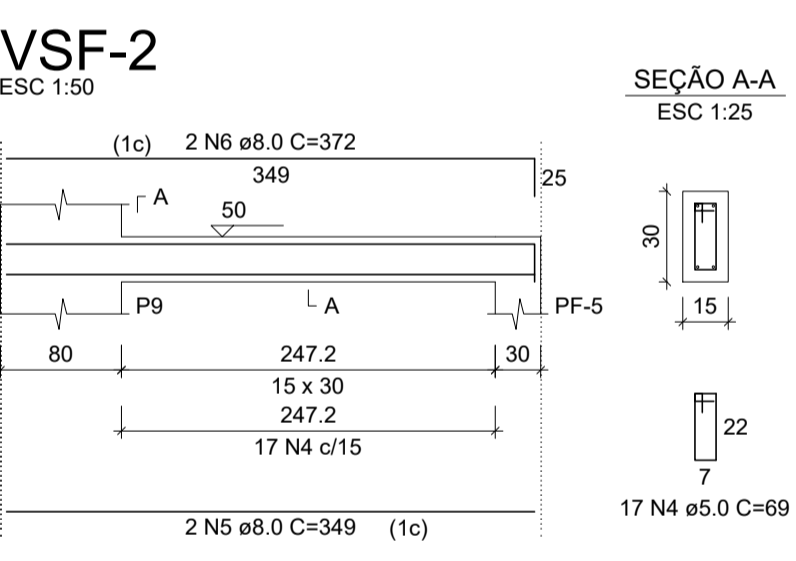
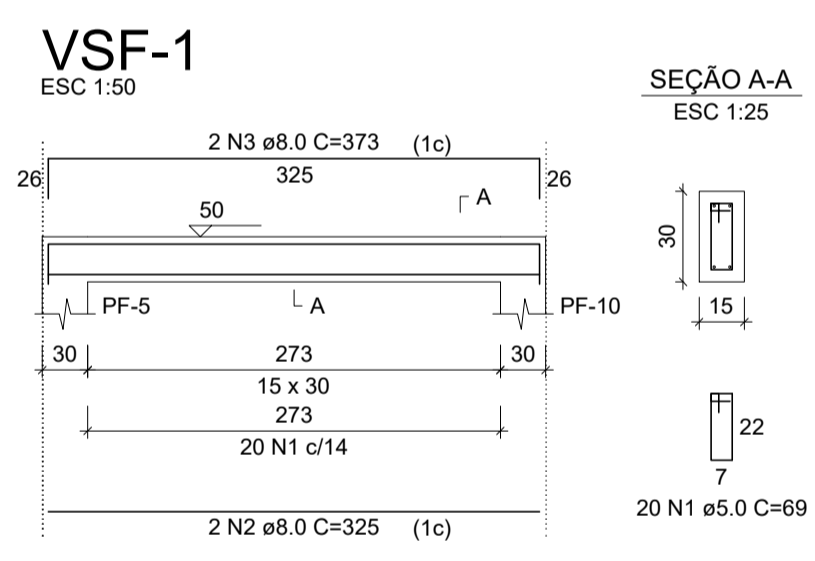
RELAÇÃO DO AÇO

ELEMENTO	AÇO	N	DIAM (mm)	QUANT	C.UNIT (cm)	C.TOTAL (cm)
VSF-1	CA60	1	5.0	20	69	1380
	CA50	2	8.0	2	325	650
VSF-2	CA50	3	8.0	2	373	746
	CA60	4	5.0	17	69	1173
VSF-3	CA50	5	8.0	2	349	698
	CA60	6	8.0	2	372	744
	CA60	7	5.0	20	69	1380
VSF-4	CA50	8	8.0	2	325	650
	CA50	9	8.0	2	373	746
VSF-5	CA60	10	5.0	72	69	4968
	CA50	11	8.0	2	1131	2262
	CA50	12	8.0	2	1161	2322
	CA60	13	5.0	17	69	1173
	CA50	14	8.0	2	349	698
CA60	15	8.0	2	372	744	

RESUMO DO AÇO

AÇO	DIAM (mm)	C.TOTAL (m)	QUANT + 0% (Barras)	PESO + 0% (kg)
CA50	8.0	102.6	9	40.5
CA60	5.0	100.7	9	15.5
PESO TOTAL (kg)				
CA50		40.5		
CA60		15.5		

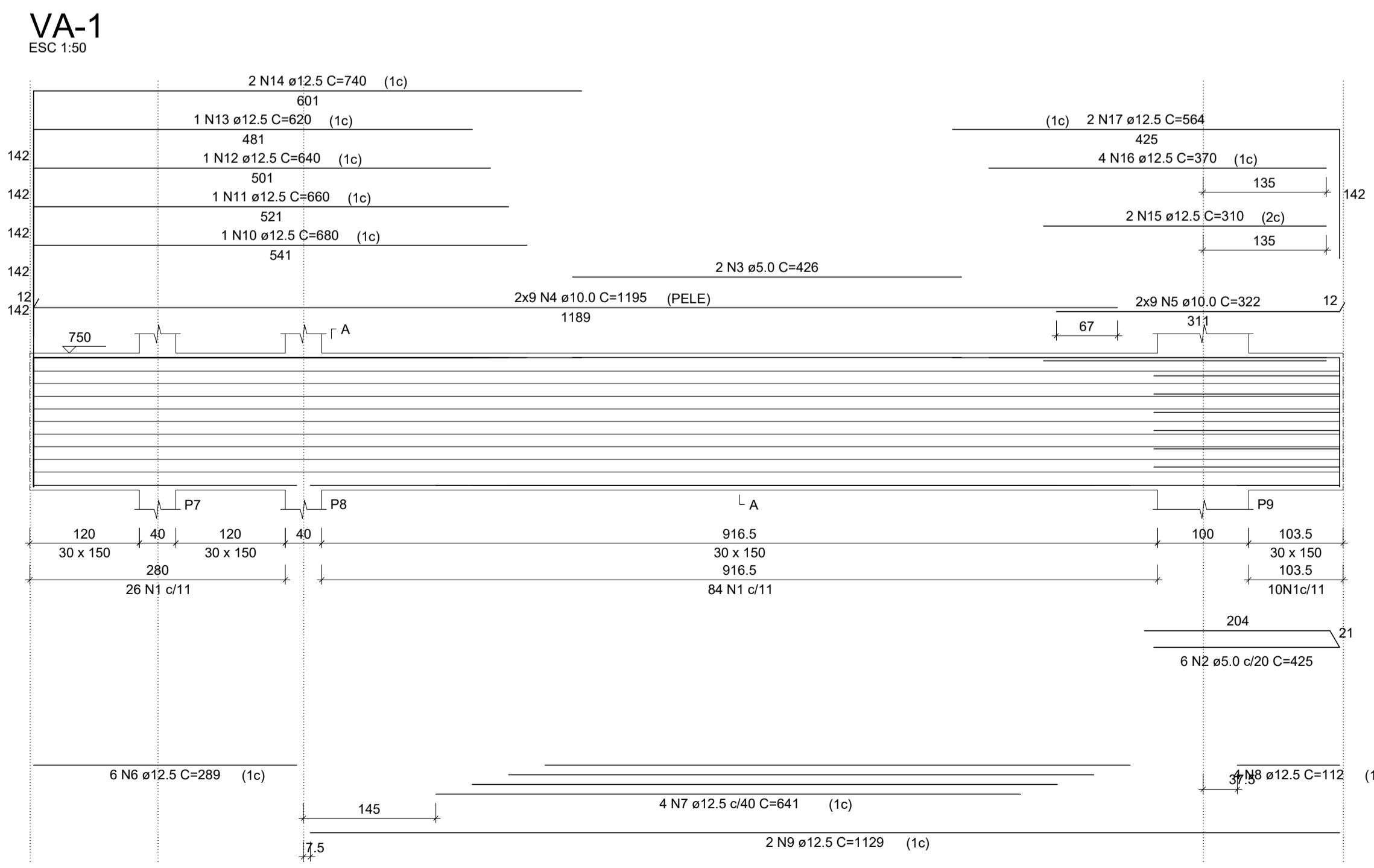
Volume de concreto (C-30) = 1.13 m³
Área de forma = 18.78 m²



RESUMO DO AÇO

AÇO	DIAM (mm)	C.TOTAL (m)	QUANT + 0% (Barras)	PESO + 0% (kg)
CA50	8.0	102.6	9	40.5
CA60	5.0	100.7	9	15.5
PESO TOTAL (kg)				
CA50		40.5		
CA60		15.5		

Volume de concreto (C-30) = 1.13 m³
Área de forma = 18.78 m²



RELAÇÃO DO AÇO

ELEMENTO	AÇO	N	DIAM (mm)	QUANT	C.UNIT (cm)	C.TOTAL (cm)
VA-1	CA60	1	5.0	120	339	40680
	CA60	2	5.0	6	425	2550
	CA60	3	5.0	2	426	852
	CA50	4	10.0	18	1195	21510
	CA50	5	10.0	18	322	5796
	CA50	6	12.5	6	289	1734
	CA50	7	12.5	4	641	2564
	CA50	8	12.5	4	112	448
	CA50	9	12.5	2	1129	2258
	CA50	10	12.5	1	680	680
	CA50	11	12.5	1	660	660
	CA50	12	12.5	1	640	640
	CA50	13	12.5	1	620	620
	CA50	14	12.5	2	740	1480
	CA50	15	12.5	2	310	620
	CA50	16	12.5	4	370	1480
	CA50	17	12.5	2	564	1128

RESUMO DO AÇO

AÇO	DIAM (mm)	C.TOTAL (m)	QUANT + 0% (Barras)	PESO + 0% (kg)
CA50	10.0	273.1	23	168.4
CA60	5.0	440.8	37	67.9
PESO TOTAL (kg)				
CA50		306.2		
CA60		67.9		

Volume de concreto (C-30) = 6.48 m³
Área de forma = 47.52 m²

Aprovação:

Lucas Costa Alves
Engenheiro Civil
CREA RS223411 (051) 98011-8413
lucascostaalves@hotmail.com

Projetos & Execuções

PROJETO ESTRUTURAL

PROJETO: **PÓRTICO ACESSO NORTE**

SITUAÇÃO:

CLIENTE: **Prefeitura Municipal de Tavares**

ENDEREÇO DA OBRA: **Avenida Izidro Teixeira Machado Centro Tavares - RS**

RESP. TÉCNICO: **LUCAS COSTA ALVES** **Prefeitura Municipal de Tavares**

CONTEÚDO: **- Detalhamento vigas baldrame - Detalhamento vigas superior floreira - Detalhamento viga principal**

ESCALA: **Indicada no desenho**

FORMATO: **A1 (594 x 841)**

PRANCHA: **EST 4/5**

DATA: **17/03/2019**

REVISÃO: **001**