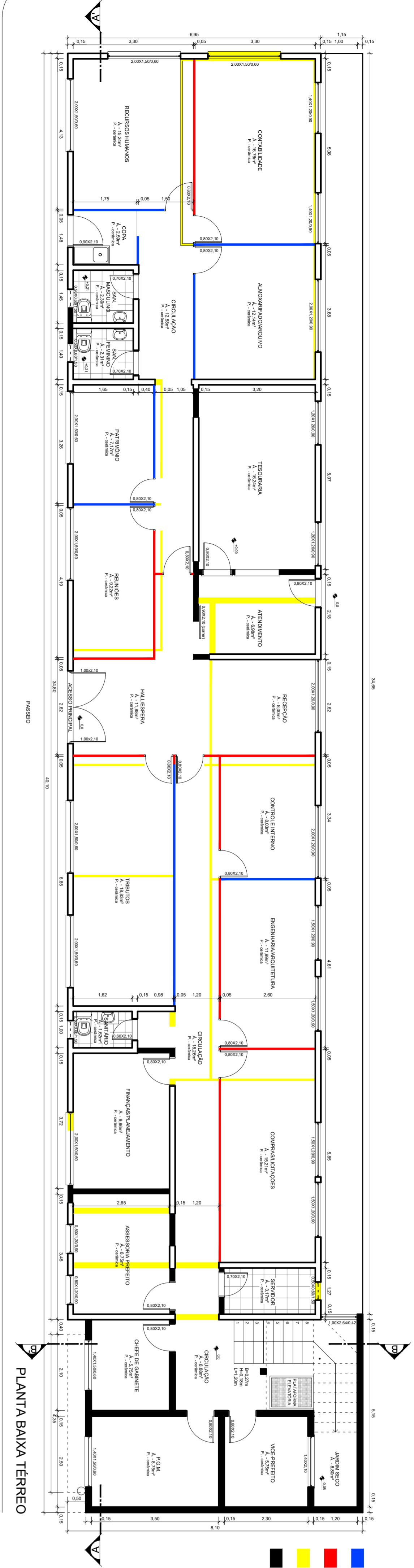
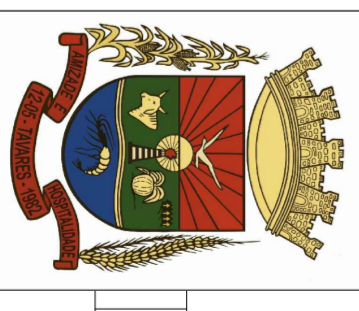
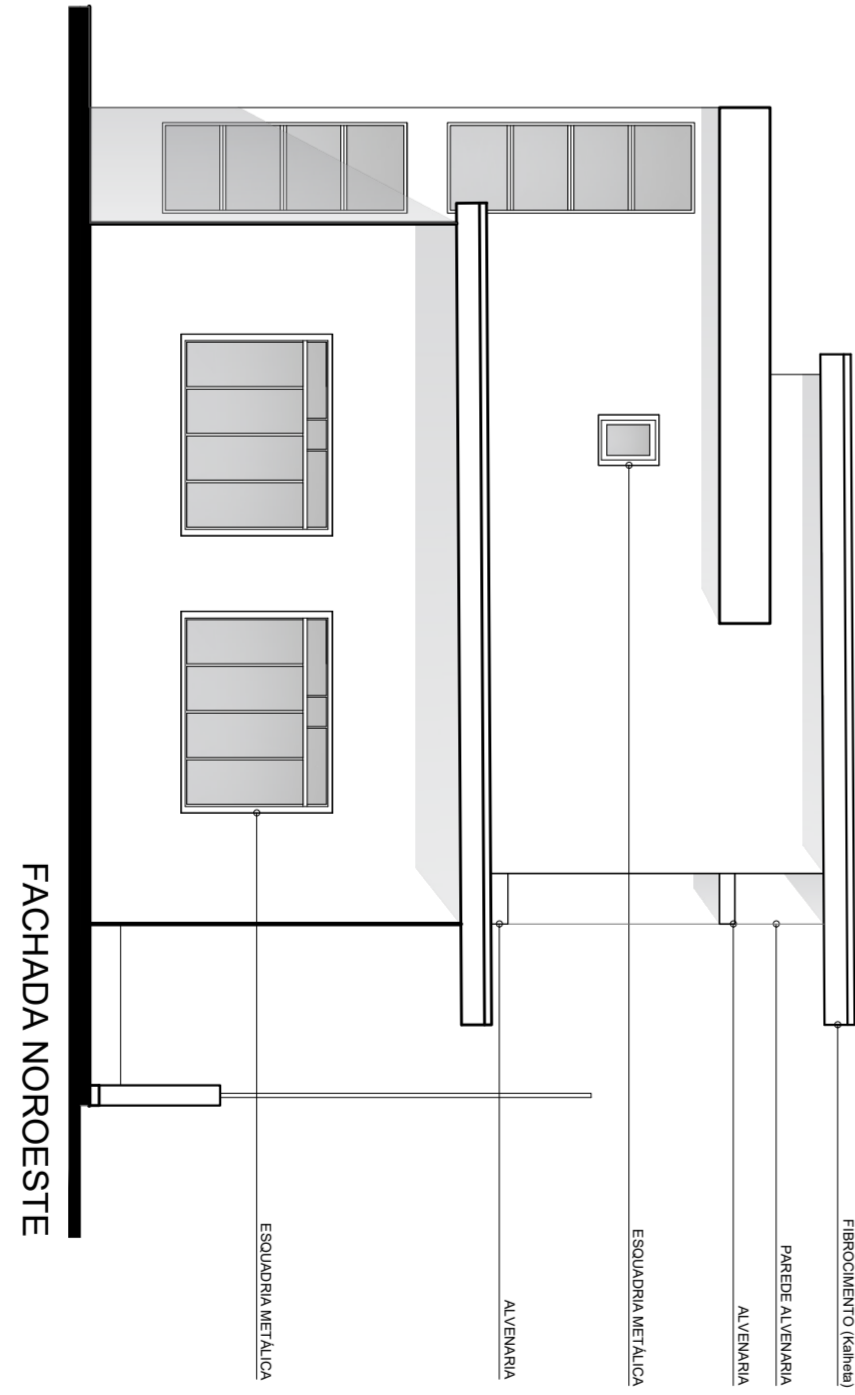
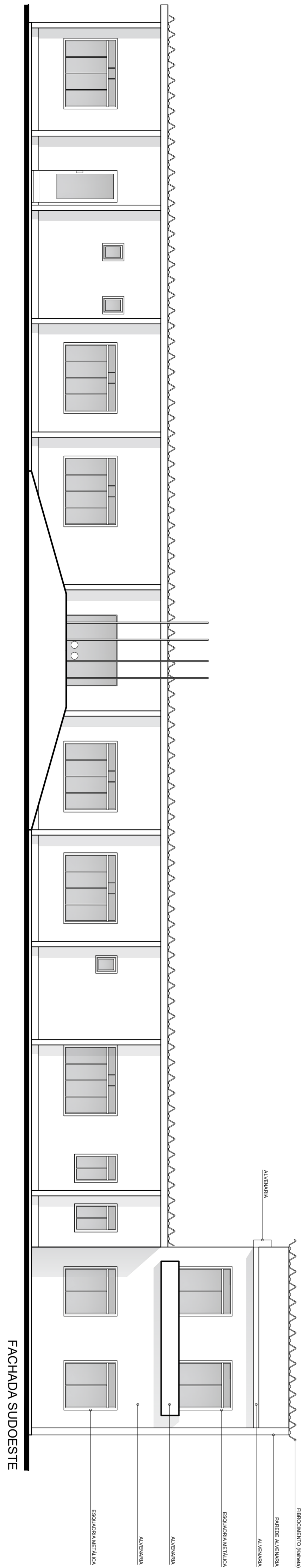
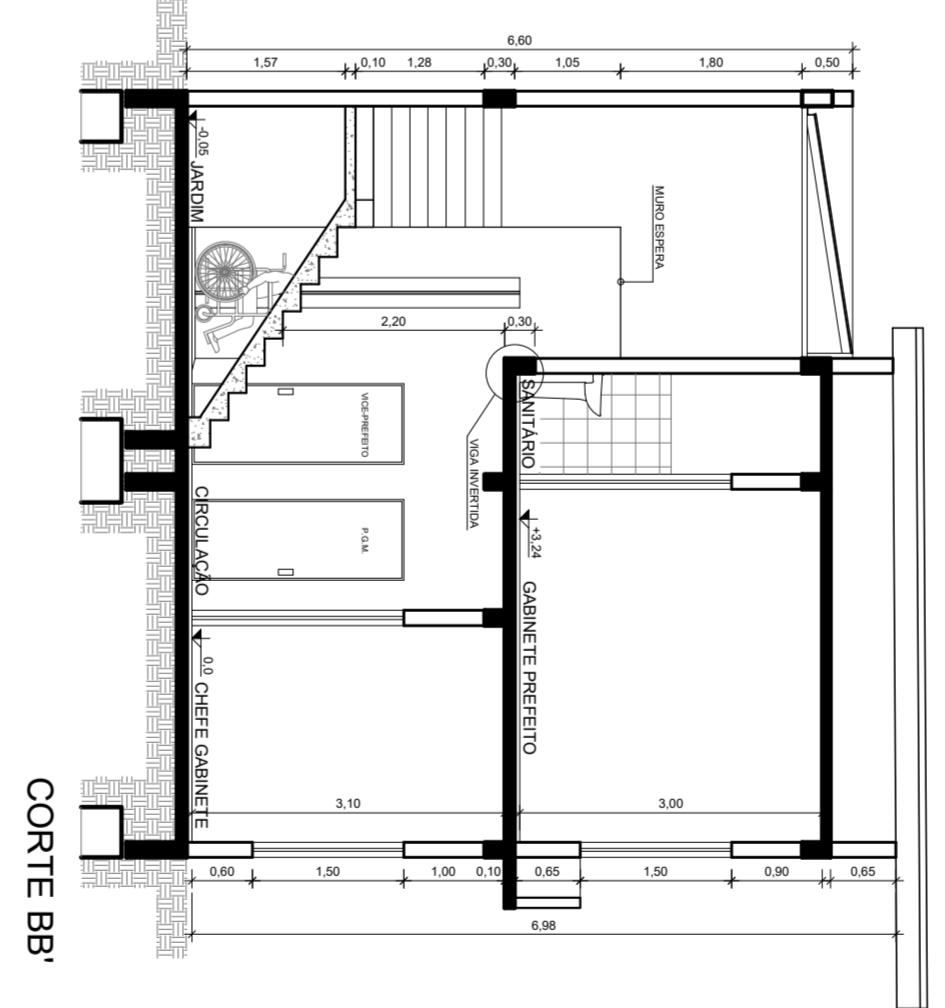
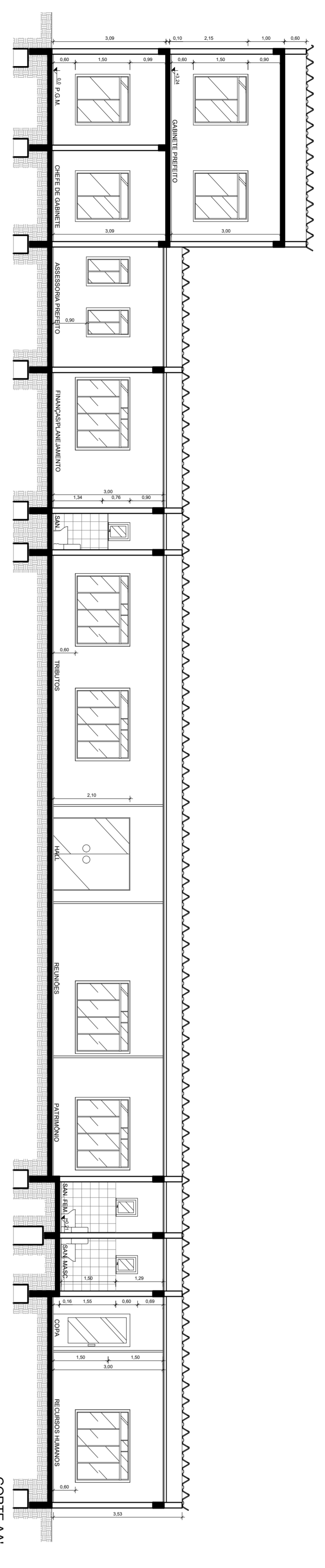
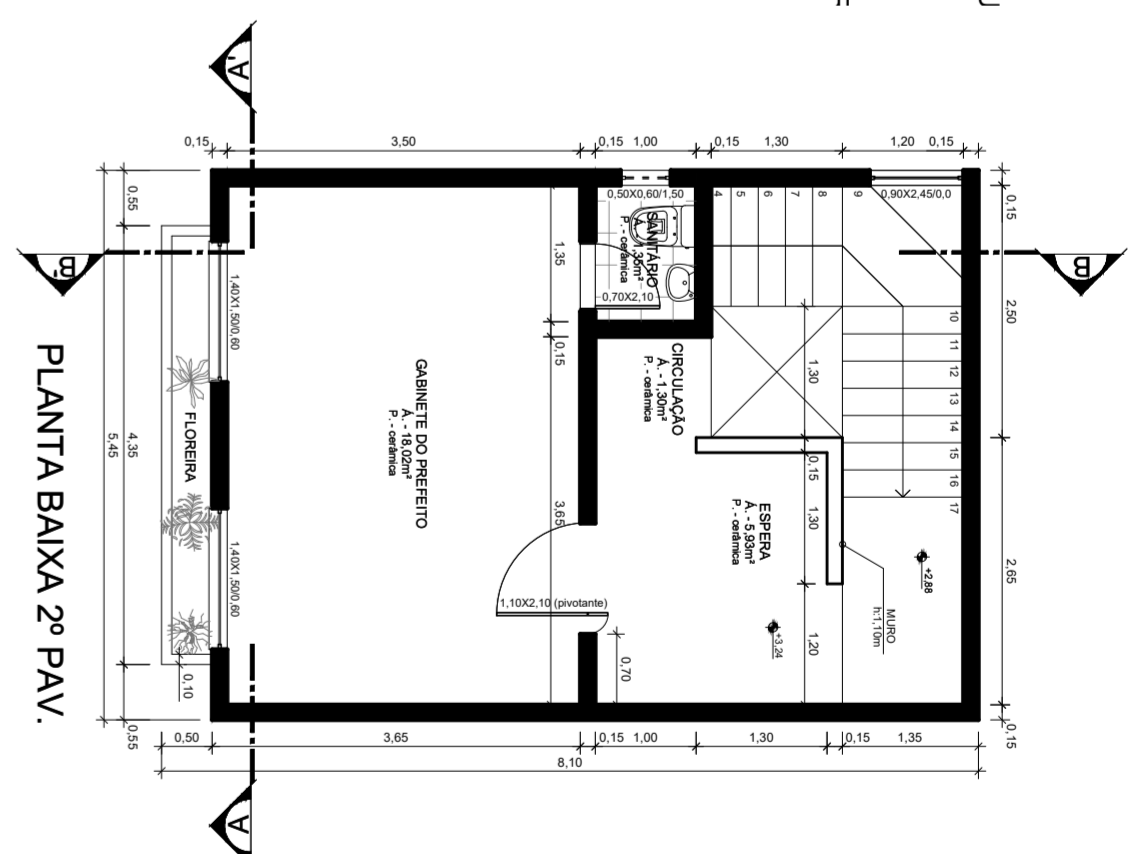


AV. 11 DE ABRIL



- DIVISÓRIA EXISTENTE A SU
- DIVISÓRIA A INSTALAR
- PAREDE/DIVISÓRIA A RETIF
- PAREDE A CONSTRUIR



PREFEITURA MUNICIPAL DE TAVARES
 Secretaria de Coordenação, Planejamento, Projetos e Meio Ambiente
 Av. João Pessoa, 228 - Centro - Tavares/RS
REFORMA/AMPLIAÇÃO PRÉDIO PREFEITURA
 ENDEREÇO: Av. João Vitor Faria, 228 - Centro - Tavares/RS
PLANTA BAVA - CORTES - ELEVACOES

ÁREA REFORMA: 24.188 m²
 ÁREA AMPLIAÇÃO: 51.87 m²
 DATA: 27/02/2020
 ESCALA: INDICADA

GARDEL MACHADO DE ARAUJO
 Prefeito Municipal - 2017/2020

Projeto - Assessorio Genes Soares
 Eng. Civil - CREANS 75.415-0
 Arq. e Urbanista - CAURS 414384-2